

Your Premiere Source For Quality Valve Products

Series #50 Ball Valve - 2 Piece Full Port - ANSI 150 Flanged End



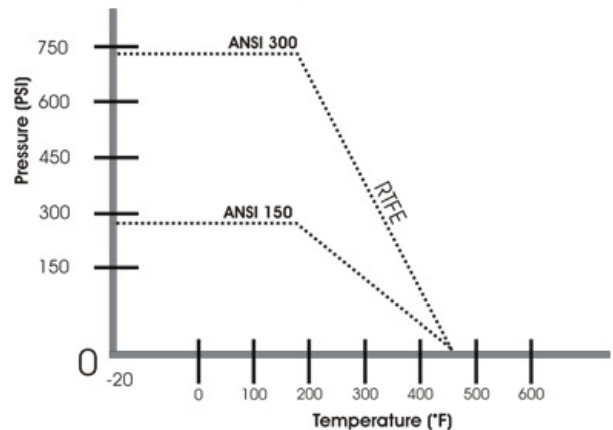
Features & Benefits

- **Full Port Design**
Full port construction improves flow characteristics for greater process efficiencies.
- **Blow-out Proof Stem**
Stem is bottom loaded to prevent removal when valve is in service.
- **Locking Handle**
Enables plant personnel to secure valve in open or closed position when manually operated.
- **Corrosion Resistant**
Made of 316 Stainless Steel (A351 GR.CF8M)
- **Investment Cast**
Improves dimensional control and reduces porosity.
- **ISO 5211 Mounting Pad**
- **Face to Face Dimensions: ANSI B16.10**
- **End Flange Dimensions: ANSI B16.5**
- **Design: ANSI 16.34**
- **Test: API 598**
- **Lever Operated or Gear Operated**

Options

- Carbon Steel ASTM A216-WCB
- 316 A351 CF8M
- Pneumatic Automation
- Stem Extensions
- Oxygen Cleaning

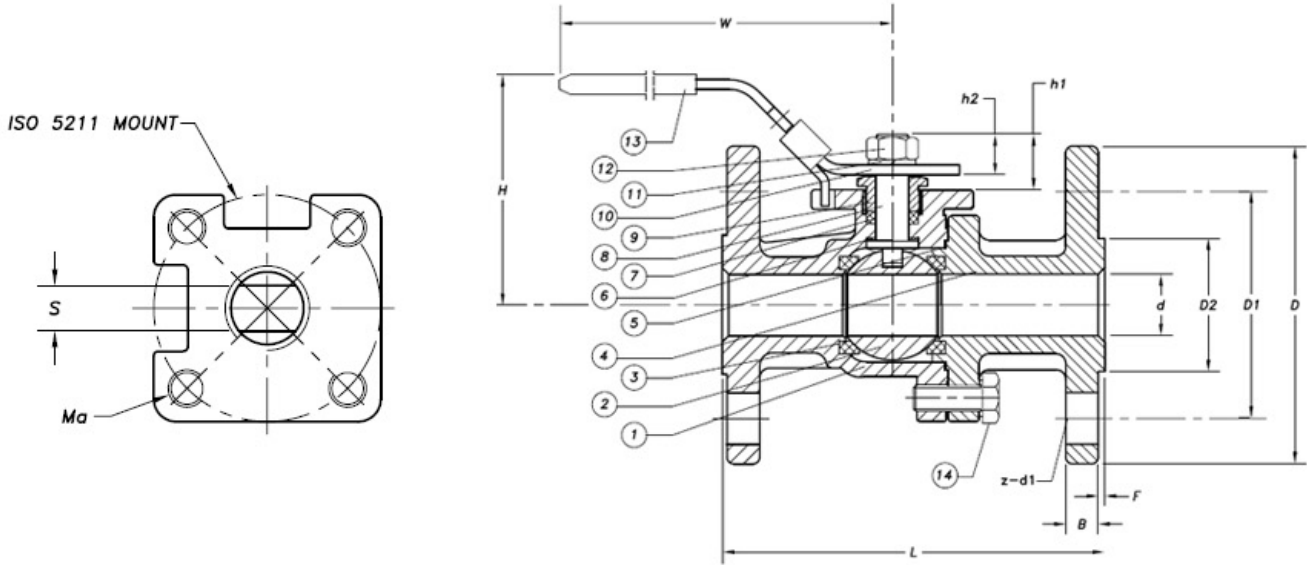
Pressure & Temperature Chart



Operating/Test Conditions

- **Temperature Range (RTFE) -20°F to 450°F**
- **Maximum working pressure:**
ANSI 150: 275 PSI WOG @100 F
ANSI 300: 720 PSI WOG @100 F
- **All valves are shell and seat tested to ANSI/ASME B16-34 and APE 598**
- **Face to Face ANSI B16-10**

Schematic Diagram



Materials & Measurements

	d	L	D	D1	D2	B	F	z-D1	H	W	ISO5211	Ma	h1	h2	S	Torque (in lbs.)	Weight (in lbs.)
1/2"	.59	4.25	3.50	2.38	1.38	.38	.06	4-0.62	2.88	5.12	F04/1.65	.197	.768	.571	.236	35.4	3.8
3/4"	.79	4.62	3.86	2.75	1.69	.44	.06	4-0.62	3.00	5.12	F04/1.65	.197	.886	.669	.276	62	4.6
1"	1.00	5.00	4.25	3.12	2.00	.50	.06	4-0.62	3.39	6.23	F05/1.97	.236	.945	.669	.276	79.8	7.1
1-1/2"	1.57	6.50	5.00	3.88	2.88	.62	.06	4-0.62	4.69	7.87	F07/2.76	.315	1.102	.827	.394	159.3	11.9
2"	2.00	7.00	6.00	4.75	3.62	.69	.06	4-0.75	5.00	7.87	F07/2.76	.315	1.102	.827	.394	221.3	18.8

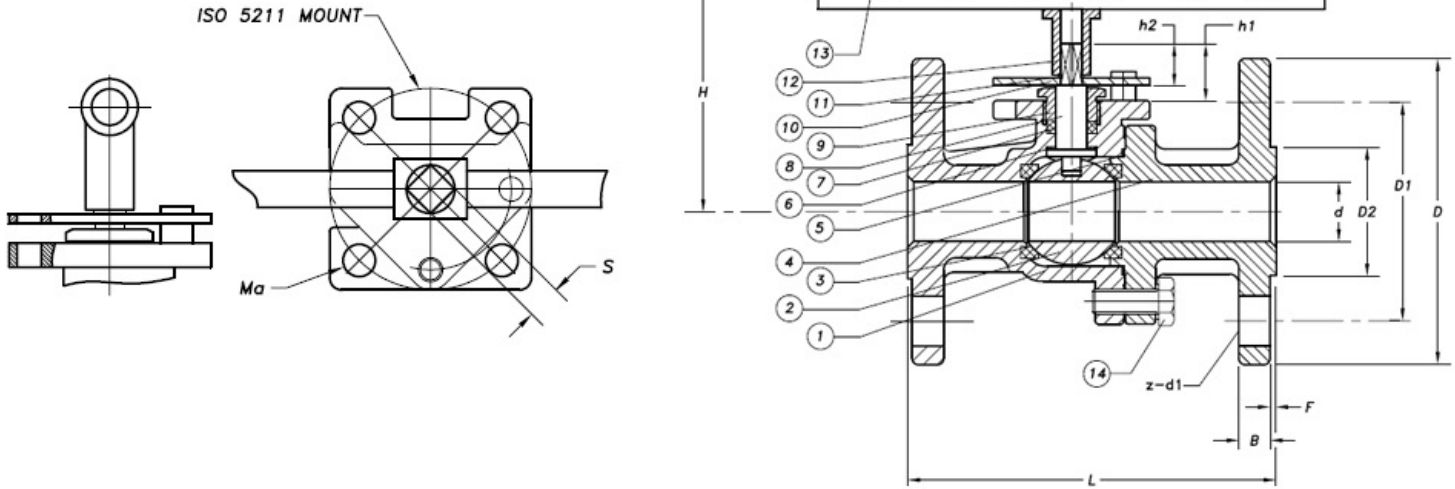
ITEM	PARTS	MATERIAL
1	Body	ASTMA351 - 316 CF8M / ASTM A216 WCB
2	Ball	316 SS
3	Seat	RTFE
4	Cap	ASTMA351 - 316 CF8M / ASTM A216 WCB
5	Joint Gasket	PTFE
6	Thrust Washer	PTFE
7	Stem Packing	PTFE
8	Stem	316 SS
9	Gland	201 SS
10	Handle	201 SS
11	Spring Washer	STAINLESS STEEL
12	Stem Nut	304 SS
13	Handle Sleeve	PVC
14	Body Bolt	304 SS

FEATURES
2 Piece Flanged Ball Valve Flange: ANSI B16.5 Class 150 Face to Face: ANSI B16.0 Inspected & Tested to comply to API598

HOW TO ORDER

VALVE SIZE	VALVE SERIES	CLASS	ALLOY	SEAT
1/2" - 6"	#50	150# = 15 / 300# = 30	4=Carbon Steel / 6=Stainless Steel	R=RTFE

Schematic Diagram



Materials & Measurements

	d	L	D	D1	D2	B	F	z-D1	H	W	ISO5211	Ma	h1	h2	S	Torque (in lbs.)	Weight (in lbs.)
2-1/2"	2.56	7.50	7.00	5.50	4.12	.69	.06	4-0.75	6.38	15.75	F10/4.02	.394	1.417	1.024	.669	442	27.5
3"	3.15	8.00	7.50	6.00	5.00	.94	.06	4-0.75	7.32	15.75	F10/4.02	.394	1.516	1.122	.748	664	39.0
4"	4.00	9.00	9.00	7.50	6.19	.94	.06	4-0.75	9.84	19.69	F10/4.02	.394	1.909	1.417	.748	708	60.6
6"	6.00	15.50	11.00	9.50	8.50	1.00	.06	4-0.88	12.21	30.00	F12/4.92	.473	2.421	1.516	.827	1328	120.2

ITEM	PARTS	MATERIAL
1	Body	ASTMA351 - 316 CF8M / ASTM A216 WCB
2	Ball	316 SS
3	Seat	RTFE
4	Cap	ASTMA351 - 316 CF8M / ASTM A216 WCB
5	Joint Gasket	PTFE
6	Thrust Washer	PTFE
7	Stem Packing	PTFE
8	Stem	316 SS
9	Gland	201 SS
10	Stop	201 SS
11	Retaining Rings	STAINLESS STEEL
12	Handle	STAINLESS STEEL
13	Handle Ext.	STAINLESS STEEL
14	Body Bolt	304 SS

FEATURES
<p>2 Piece Flanged Ball Valve Flange: ANSI B16.5 Class 150 Face to Face: ANSI B16.0 Inspected & Tested to comply to API598</p>

HOW TO ORDER

VALVE SIZE	VALVE SERIES	CLASS	ALLOY	SEAT
1/2" - 6"	#50	150# = 15 / 300# = 30	4=Carbon Steel / 6=Stainless Steel	R=RTFE