

Your Premiere Source For Quality Valve Products

Series #FS50 Ball Valve - 2 Piece Full Port - ANSI 150 Fire Safe API 607 5th Edition Tested & Certified



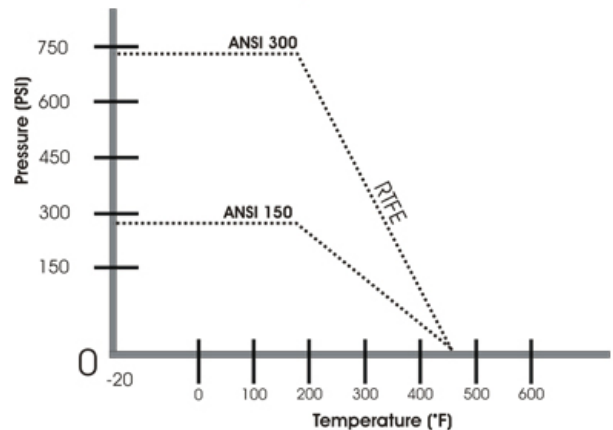
Features & Benefits

- **Full Port Design**
Full port construction improves flow characteristics for greater process efficiencies.
- **Blow-out Proof Stem**
Stem is bottom loaded to prevent removal when valve is in service.
- **Locking Handle**
Enables plant personnel to secure valve in open or closed position when manually operated.
- **Corrosion Resistant**
Made of 316 Stainless Steel (A351 GR.CF8M)
- **Investment Cast**
Improves dimensional control and reduces porosity.
- **ISO 5211 Mounting Pad**
- **Fire Safe Design**
- **API 607 5th Edition Tested & Certified**

Options

- Carbon Steel ASTM A216-WCB
- Stainless Steel ASTM A351-316
- Pneumatic or Electric Automation
- Stem Extensions
- ANSI 300 Flanged

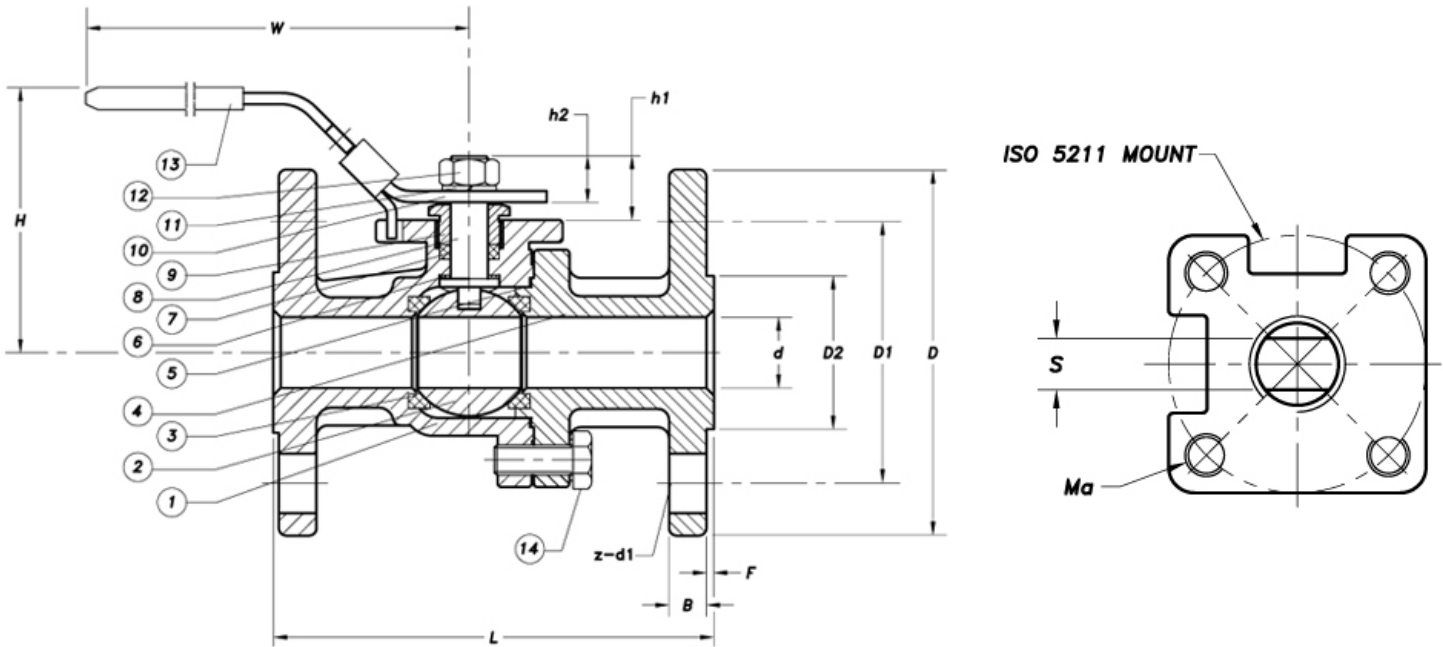
Pressure & Temperature Chart



Operating/Test Conditions

- **Temperature Range (RTFE) -20°F to 450°F**
- **Maximum working pressure:**
ANSI 150: 275 PSI WOG @100 F
ANSI 300: 720 PSI WOG @100 F
- **All valves are shell and seat tested to ANSI/ASME B16-34 and APE 598**
- **Face to Face ANSI B16-10**

Schematic Diagram

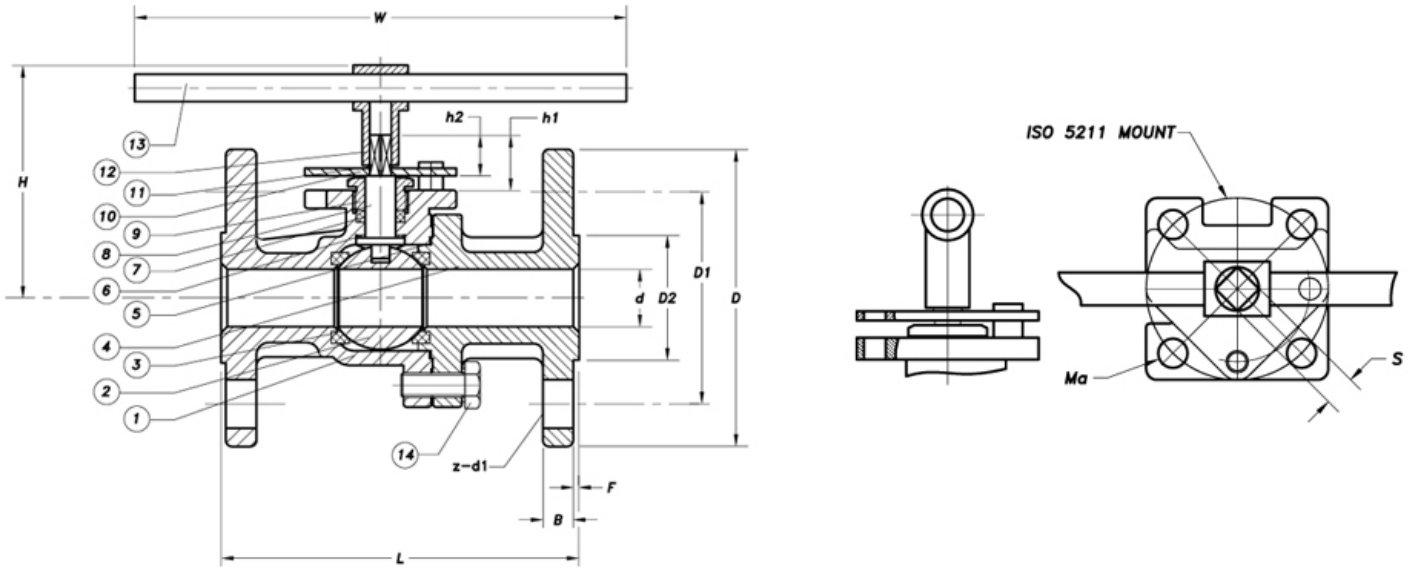


Materials & Measurements

	d	L	D	D1	D2	B	F	z-d1	H	W	ISO5211	Ma	h1	h2	S	Torque (in lbs.)	Weight (in lbs.)
1"	1.00	5.00	4.25	3.12	2.00	.50	.06	4-0.62	3.39	6.23	F05/1.97	.236	.74	.59	.276	79.8	7.1
1 1/2"	1.57	6.50	5.00	3.88	2.88	.62	.06	4-0.62	4.69	7.87	F07/2.76	.315	1.18	.92	.36	159.3	11.9
2"	2.00	7.00	6.00	4.75	3.62	.69	.06	4-0.75	5.00	7.87	F07/2.76	.315	1.102	.85	.36	221.3	18.9

ITEM	PARTS	MATERIAL
1	Body	ASTM A351 CF8M / ASTM A216 WCB
2	Ball	316 SS
3	Seat	RTFE
4	Cap	ASTM A351 CF8M / ASTM A216 WCB
5	Joint Gasket	GRAPHITE+304
6	Thrust Washer	PTFE
7	Stem Packing	GRAPHITE
8	Stem	316 SS
9	Gland	201 SS
10	Handle	201 SS
11	Spring Washer	STAINLESS STEEL
12	Stem Nut	304 SS
13	Handle Sleeve	PVC
14	Body Bolt	304 SS

Schematic Diagram



Materials & Measurements

	d	L	D	D1	D2	B	F	z-d1	H	W	ISO5211	Ma	h1	h2	S	Torque (in lbs.)	Weight (in lbs.)
2 1/2"	2.56	7.50	7.00	5.50	4.12	.69	.06	4-0.75	6.38	15.75	F10/4.02	.394	1.417	1.024	.669	442	28.1
3"	3.15	8.00	7.50	6.00	5.00	.94	.06	4-0.75	7.32	15.75	F10/4.02	.394	1.77	1.35	.748	664	39.1
4"	4.00	9.00	9.00	7.50	6.19	.94	.06	4-0.75	9.84	19.69	F10/4.02	.394	1.84	1.37	.748	708	60.7

ITEM	PARTS	MATERIAL
1	Body	ASTM A351 CF8M / ASTM A216 WCB
2	Ball	316 SS
3	Seat	RTFE
4	Cap	ASTM A351 CF8M / ASTM A216 WCB
5	Joint Gasket	GRAPHITE+304
6	Thrust Washer	PTFE
7	Stem Packing	GRAPHITE
8	Stem	316 SS
9	Gland	201 SS
10	Stop	201 SS
11	Retaining Rings	STAINLESS STEEL
12	Handle	STAINLESS STEEL
13	Handle Ext.	STAINLESS STEEL
14	Body Bolt	304 SS

FEATURES

2-Piece Flanged Ball Valve
 Flange: ANSI B16.5 Class 150
 Face to Face: ANSI B16.10
 Inspected & Tested to Comply to API598

HOW TO ORDER

VALVE SIZE	VALVE SERIES	CLASS	ALLOY	SEAT
1/2" - 4"	#FS50	150# = 15 / 300# = 30	4=Carbon Steel / 6=316	R=RTFE