

Your Premiere Source For Quality Valve Products

Series #53-NM - Ball Valve - 3 Piece Full Port



Features & Benefits

Full Port Design

Improves flow resulting in increased process efficiencies.

3- Piece Design

Swing-out design for easy maintenance.

Blow-out Proof Stem

Stem is bottom loaded to prevent removal when valve is in service.

Locking Handle

Enables plant personnel to secure valve in open or closed position when manually operated.

Investment Cast

Improved dimensional control and reduces porosity.

Operating/Test Conditions

Temperature Range (RTFE)

-20° F to 450° F

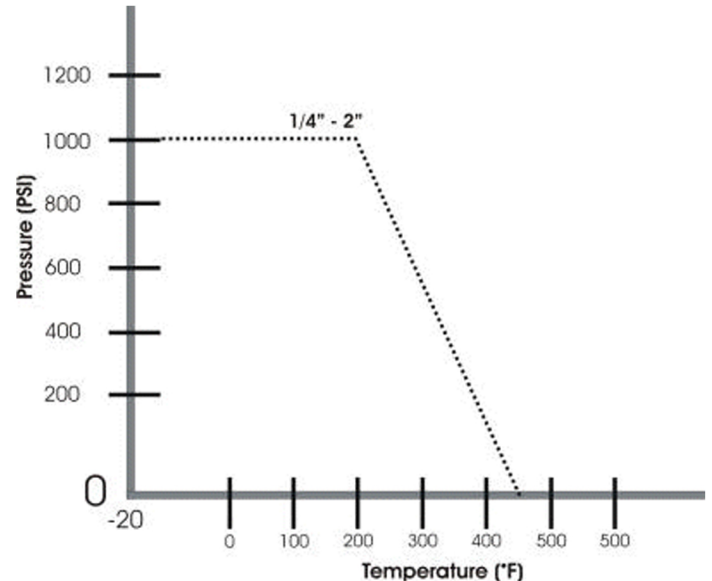
1000 W.O.G.

All materials comply with applicable ASTM material specifications.

Test and Inspection to SPI 598

ANSI/ASME B16.11

Pressure & Temperature Chart



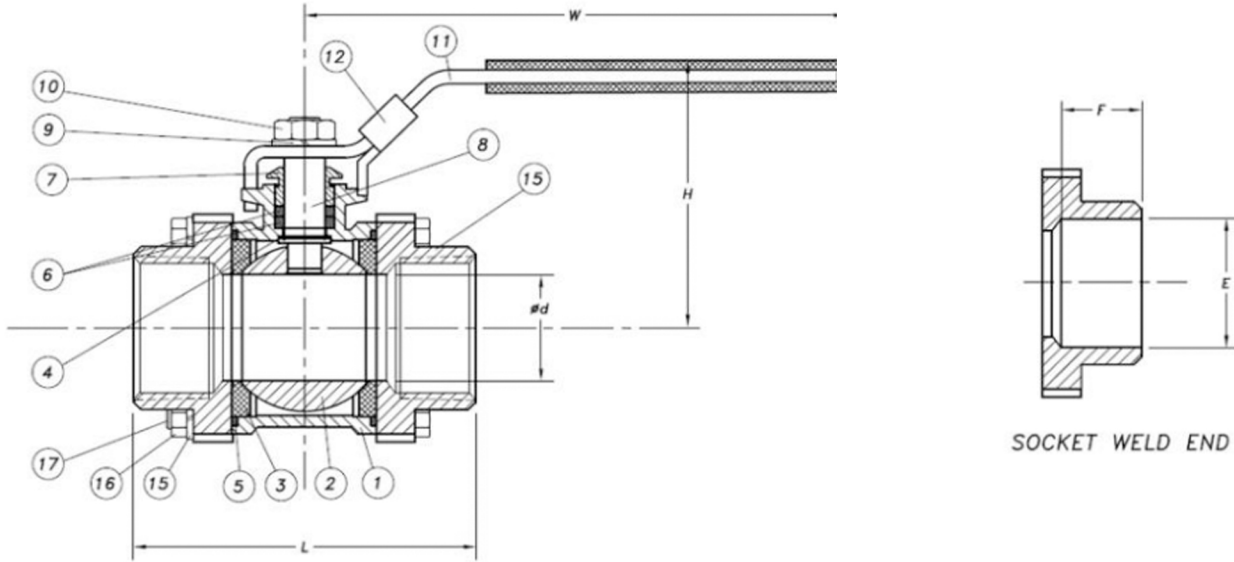
Options

Available in 316 Stainless Steel Construction ASTM A351-CF8M

Available in Carbon Steel Construction ASTM A216-WCB

End Connections available in:
 NPT, Socketweld End

Schematic Diagram



Materials & Measurements

SIZE	ød	L	H	W	F	E	Torque (in lbs)
1/4"	.46	2.00	1.89	3.94	.39	.56	45
3/8"	.47	2.00	1.89	3.94	.39	.67	45
1/2"	.59	2.42	2.05	3.94	.39	.85	54
3/4"	.79	2.79	2.40	5.00	.55	1.07	89
1"	.98	3.14	2.56	5.00	.55	1.32	107
1 1/4"	1.26	3.66	3.11	6.07	.59	1.73	151
1 1/2"	1.50	4.06	3.27	6.07	.59	1.97	266
2"	1.97	4.94	3.82	7.56	.75	2.43	425
2 1/2"	2.56	6.23	5.32	9.61	.83	3.00	514
3"	3.15	7.06	5.67	9.61	.95	3.62	850
4"	3.94	8.35	6.30	10.95	.95	4.54	1098

ITEM	PARTS	MATERIAL
1	Body	CF8M WCB
2	Ball	
3	Ball Seat	REIN. PTFE (15%)
4	Thrust Washer	PTFE
5	Body Gasket	PTFE
6	Stem Packing	PTFE
7	Gland	304SS
8	Stem	316SS
9	Spring Washer	304SS
10	Handle Nut	304SS
11	Handle	304SS
12	Handle Lock	304SS
13	Handle Sleeve	PLASTIC
14	Cap	CF8M WCB
15	Spring Washer	304SS
16	Nut	304SS
17	Bolt	304SS

How To Order

Valve Size	Valve Series	Body	Ball & Stem	Seat	Ends
1/4" - 4"	53NM = 3 PC Full Port	6 = 316 4 = Carbon Stl.	6 = 316	R = RTFE	SW = Socket Weld TE = NPT