

Standard Features and Benefits

Full Port Design

Full port Construction improves flow characteristics for greater process efficiencies.

3 - Piece Design

Swing out construction makes the valve easy to repair in line.

Blow-out Proof Stem

Stem is bottom loaded to prevent removal when valve is in service.

Fire Safe Tested to API 607 4th Edition

High Cycle Live Loaded Stem Packing

Spring energized stem seals self adjust to compensate for wear, pressure, and temperature changes enduring a leak tight seal and extending service life.

ISO 5211 Mounting Pad with Centering LIP

Ideal for actuation. Centering Lip feature assures precise alignment of bracket, stem and coupler.

Locking Handle

Enables plant personnel to secure valve in open or closed position when manually operated.

Heavy Duty Construction

Made to full ANSI B16.34 class 600 dimensions for trouble-free performance over a wide range of service conditions.

Investment Cast

High quality investment castings improve dimensional control and reduce porosity.

Traceability

CMTR's are available upon request.

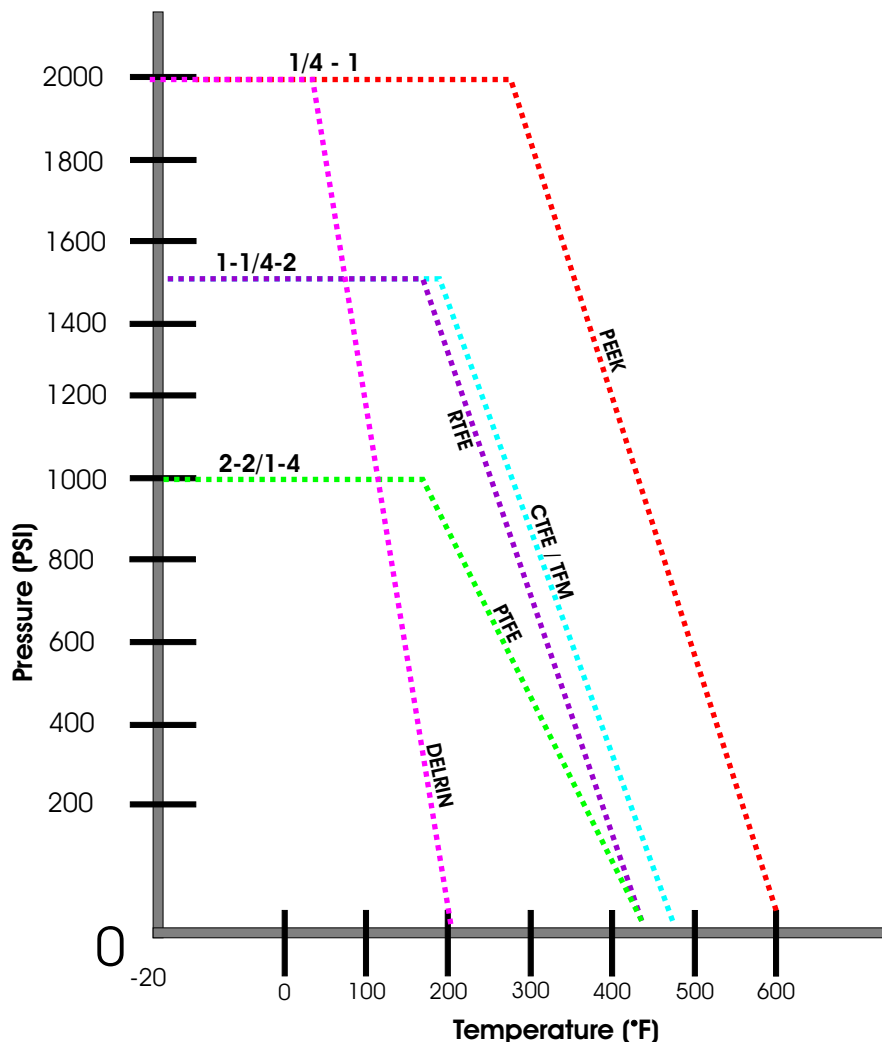
Operating / Test Conditions

Temperature Range (RFFE) -20 F to 550 F (depending on seats)
 Maximum working pressure: 3000 PSI (depending on size and seats)
 All valves built and pressure tested to ANSI/ASME B16.34, MSS-SP-110 and API 598
 All materials comply with applicable ASTM material specifications.
 End connections: all to B16.34, FNPT to B1.20.1 socket weld to B16.11, Butt weld to B16.25.

Options

End connections available in NPT, Socket Weld and Butt Weld.
 High pressure seats and seals.
 High temperature seats and seals.
 Available in Carbon Steel Construction ASTM-A216-WCB.

Pressure & Temperature Chart



SERIES #FS55 BALL VALVE

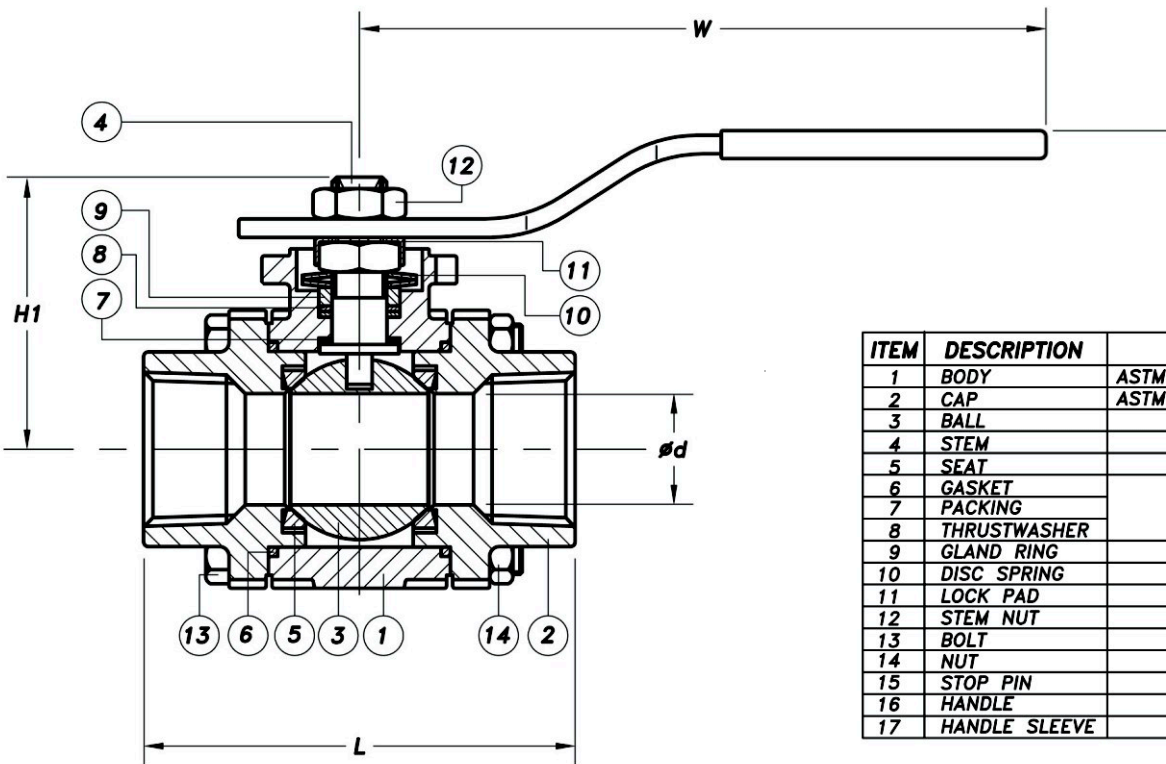
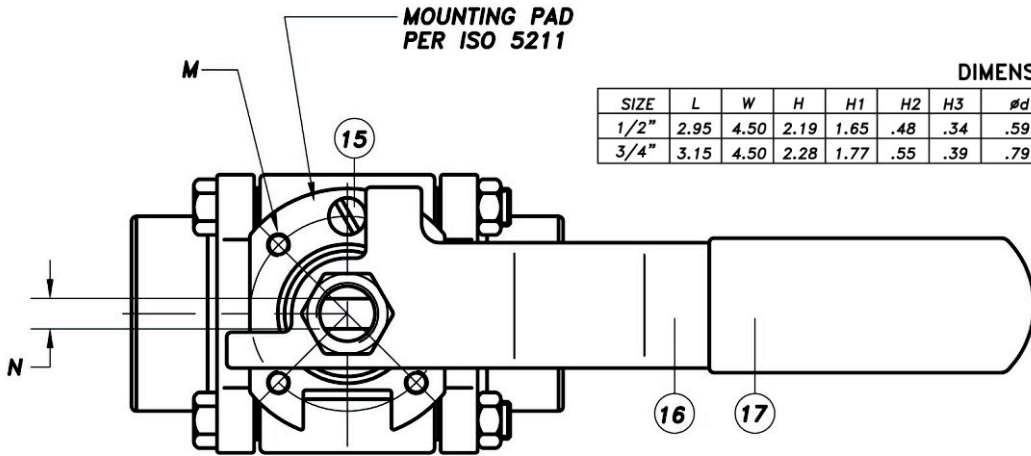
3-PIECE FIRE SAFE API 607 4TH EDITION

1/2 - 3/4"

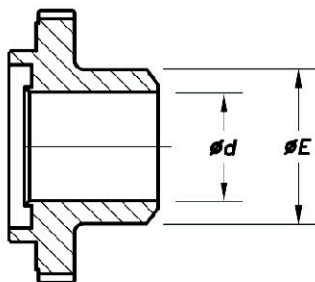
MOUNTING PAD
PER ISO 5211

DIMENSIONS

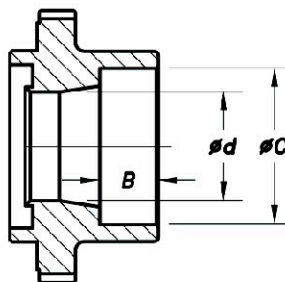
SIZE	L	W	H	H1	H2	H3	Ød	E	B	ØC	N	M	ISO 5211	B.C.	Wgt (lbs)
1/2"	2.95	4.50	2.19	1.65	.48	.34	.59	.88	.39	.87	.22	M5	F03/1.42		2
3/4"	3.15	4.50	2.28	1.77	.55	.39	.79	1.10	.51	1.08	.22	M5	F03/1.42		2.5



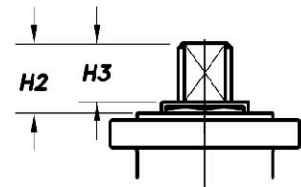
ITEM	DESCRIPTION	MATERIAL	
1	BODY	ASTM A351-CF8M	ASTM A216-WCB
2	CAP	ASTM A351-CF3M	
3	BALL	ASTM A351-CF8M	
4	STEM	ASTM A276-316	
5	SEAT	RTFE	
6	GASKET	GRAPHITE	
7	PACKING		
8	THRUSTWASHER		
9	GLAND RING	AISI 304SS	
10	DISC SPRING	AISI 301SS/50 CrV4	
11	LOCK PAD	ASTM A167-304SS	
12	STEM NUT	ASTM A194 GR. 8	
13	BOLT	ASTM A194 GR. 8B	
14	NUT	ASTM A194 GR. 8	
15	STOP PIN	AISI 304SS	
16	HANDLE	ASTM A167-304SS	
17	HANDLE SLEEVE	PVC	



BUTT WELD SCH.40



SOCKET WELD



Stem Dimensions
for Actuation

SERIES #FS55 BALL VALVE

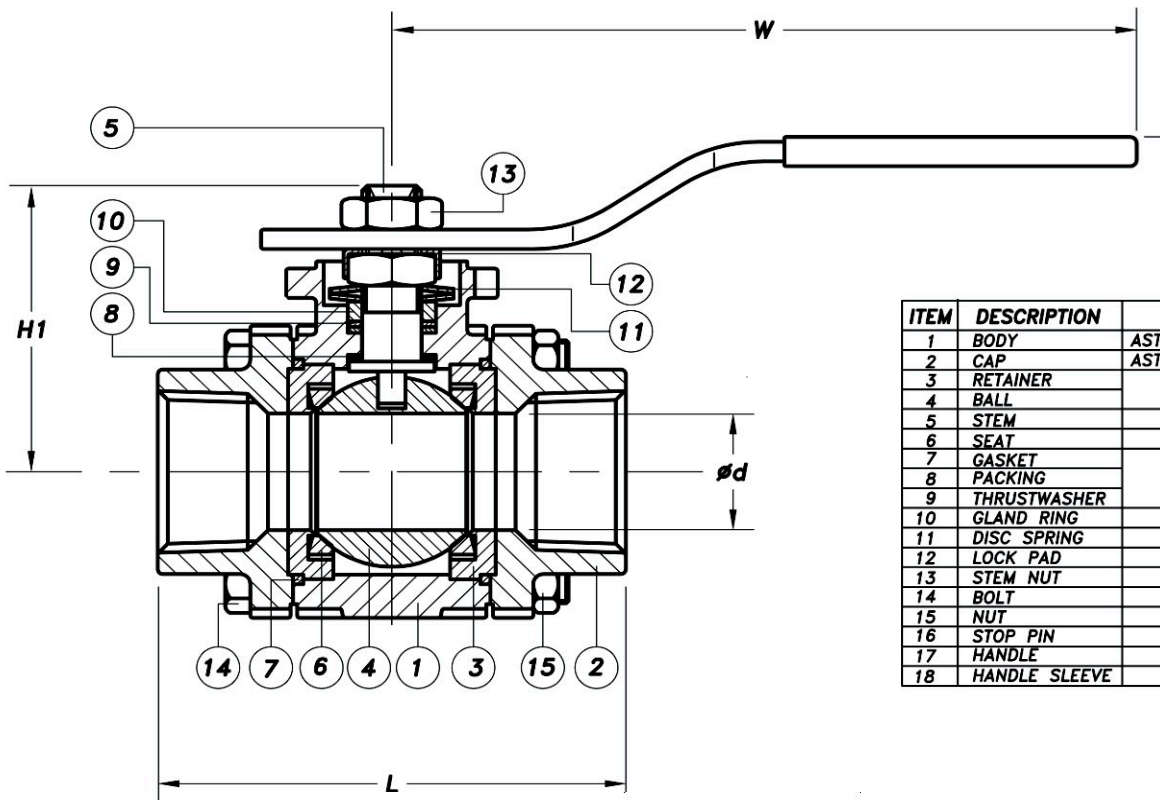
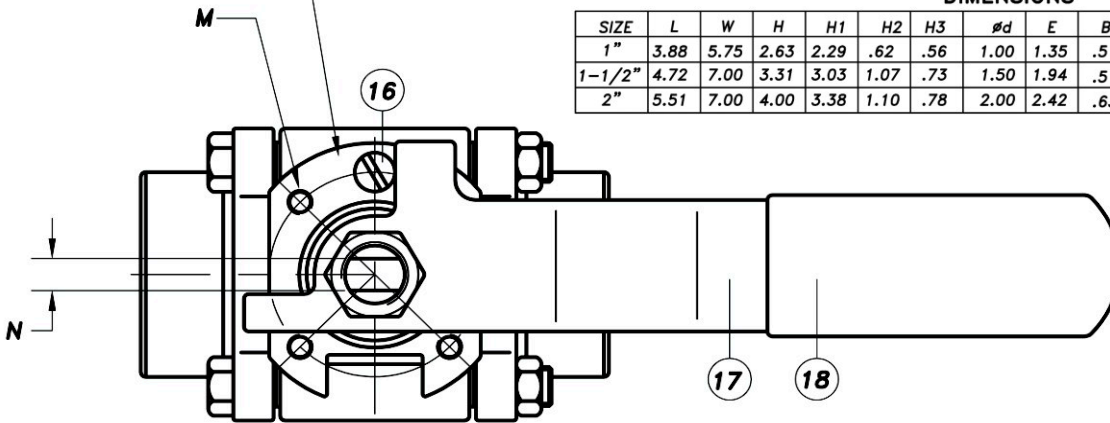
3-PIECE FIRE SAFE API 607 4TH EDITION

1" - 2"

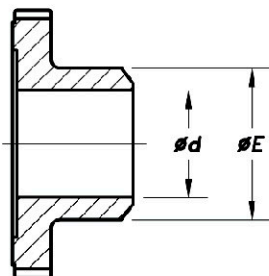
MOUNTING PAD
PER ISO

DIMENSIONS

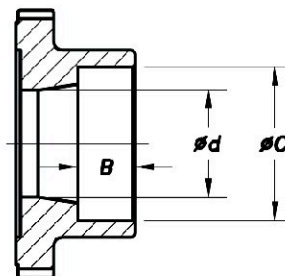
SIZE	L	W	H	H1	H2	H3	ød	E	B	øC	N	M	ISO 5211	B.C.	Wgt (lbs)
1"	3.88	5.75	2.63	2.29	.62	.56	1.00	1.35	.51	1.36	.30	M5	F04/1.65		4
1-1/2"	4.72	7.00	3.31	3.03	1.07	.73	1.50	1.94	.51	1.93	.34	M6	F05/1.97		8
2"	5.51	7.00	4.00	3.38	1.10	.78	2.00	2.42	.63	2.41	.34	M6	F05/1.97		14



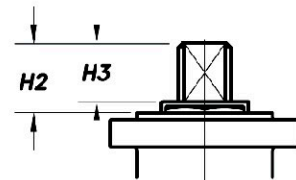
ITEM	DESCRIPTION	MATERIAL	
1	BODY	ASTM A351-CF8M	
2	CAP	ASTM A351-CF3M	ASTM A216-WCB
3	RETAINER	ASTM A351-CF8M	
4	BALL		
5	STEM	ASTM A276-316	
6	SEAT	RTFE	
7	GASKET		
8	PACKING	GRAPHITE	
9	THRUSTWASHER		
10	GLAND RING	AISI 304SS	
11	DISC SPRING	AISI 301SS/50 CrV4	
12	LOCK PAD	ASTM A167-304SS	
13	STEM NUT	ASTM A194 GR. 8	
14	BOLT	ASTM A194 GR. B8	
15	NUT	ASTM A194 GR. 8	
16	STOP PIN	AISI 304SS	
17	HANDLE	ASTM A167-304SS	
18	HANDLE SLEEVE	PVC	



BUTT WELD SCH.40



SOCKET WELD



Stem Dimensions
for Actuation

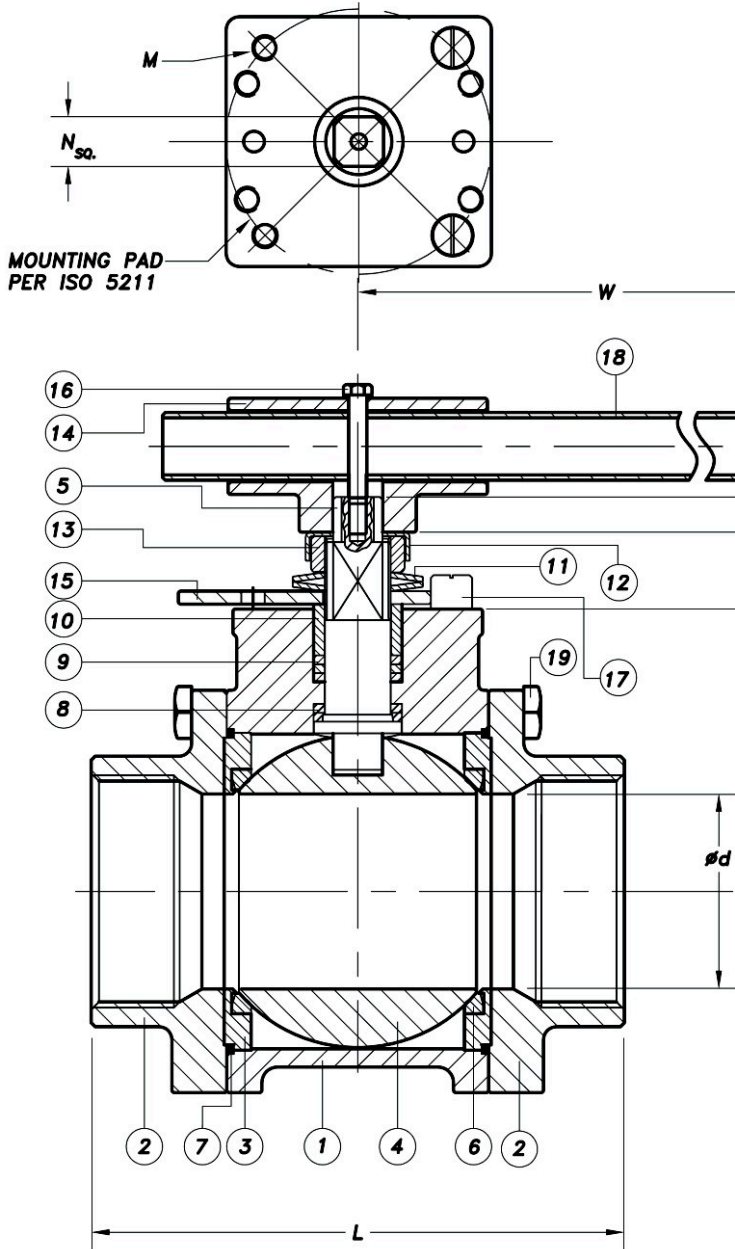
SERIES #FS55 BALL VALVE

3-PIECE FIRE SAFE API 607 4TH EDITION

2-1/2 - 4"

DIMENSIONS

SIZE	L	W	H	H1	H2	H3	K	∅d	E	B	∅C	N	M	ISO 5211 B.C.	Wgt (lbs)
2-1/2"	7.25	8.84	5.24	3.25	1.65	.58	3.62	2.48	2.91	.63	2.91	.55	M10	F10/4.02	22
3"	8.03	13.75	6.60	4.28	1.81	.58	4.09	2.99	3.54	.63	3.54	.75	M10	F10/4.02	35
4"	9.45	13.75	7.14	4.79	1.83	.58	5.67	3.78	4.53	.79	4.55	.75	M10	F10/4.02	55



ITEM	DESCRIPTION	MATERIAL
1	BODY	ASTM A351-CF8M
2	CAP	ASTM A351-CF3M
3	RETAINER	ASTM A351-CF8M
4	BALL	
5	STEM	ASTM A276-316
6	SEAT	RTFE
7	GASKET	
8	THRUSTWASHER	GRAPHITE
9	PACKING	
10	GLAND RING	AISI 304SS
11	DISC SPRING	AISI 301SS/50 CrV4
12	LOCK PAD	ASTM A167-304SS
13	STEM NUT	ASTM A194 GR. 8
14	WRENCH BLOCK	
15	STOPPER	
16	HEX HD BOLT	AISI 304SS
17	STOP PIN	
18	HANDLE	
19	BOLT	

BUTT WELD SCH.40

SOCKET WELD

How to Order

Valve Size	Valve Series	Body & End	Ball & Stem	Seat	Seal	Ends
1/2" Thru 4"	FS55 = Full Port (API 601 4th Edition)	6 = 316 4 = Carbon Steel	6 = 316	T = PTFE R = RFFE M = TFM P = Peak D = Delrin	G = Graph Oil	SW = Socket Weld TE = NPT BW = Butt Weld



151 Memorial Drive Shrewsbury, MA 01545
 Toll Free: 1-866-59SIMCO (866-597-4626)
 Phone: 508-845-3300 Fax: 508-845-3304
 info@simcovalve.com www.simcovalve.com