

*Your Premiere Source For Quality Valve Products*

## Series #20 Ball Valve - 316 & Carbon Steel Body - 2 Piece Standard Port



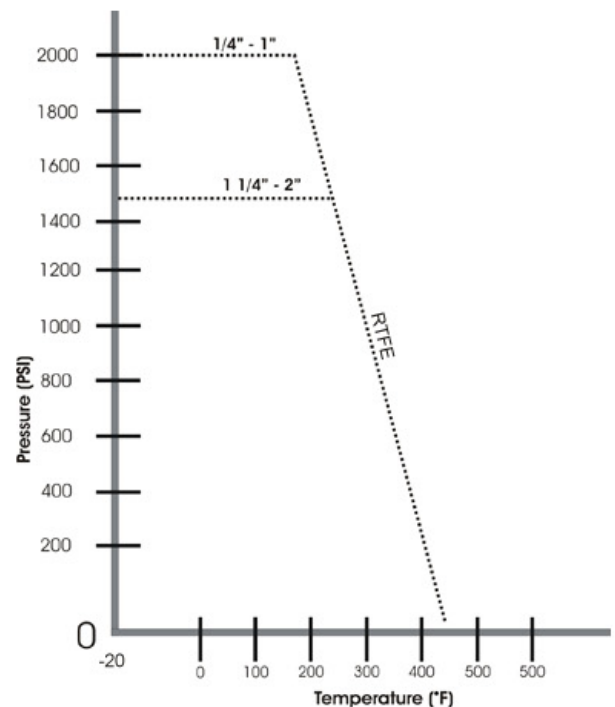
### Features & Benefits

- **Economical 2-Piece Design**
- **Standard Port**
- **Blow-out Proof Stem**  
Stem is bottom loaded to prevent removal when valve is in service.
- **Locking Handle**  
Enables plant personnel to secure valve in open or closed position when manually operated.
- **Mounting PAD**
- **Corrosion Resistant**  
Made of 316 Stainless Steel (A351 GR.CF8M) For superior chemical resistance and longer service life. Carbon steel and 316 body valves come standard with stainless steel ball, stem and latch lock handle.
- **Investment Cast**  
Improves dimensional control and reduces porosity.

### Operating/Test Conditions

- **Temperature Range (RTFE) -20°F to 450°F**
- **Maximum working pressure:**  
2000 W.O.G (1/4" - 1")  
1500 W.O.G (1 1/4" - 2")
- **Threaded ENDS conform to ASME B1.20.1**
- **Applicable standards:**  
Wall thickness ASME B16.34  
Test and Inspection API 598

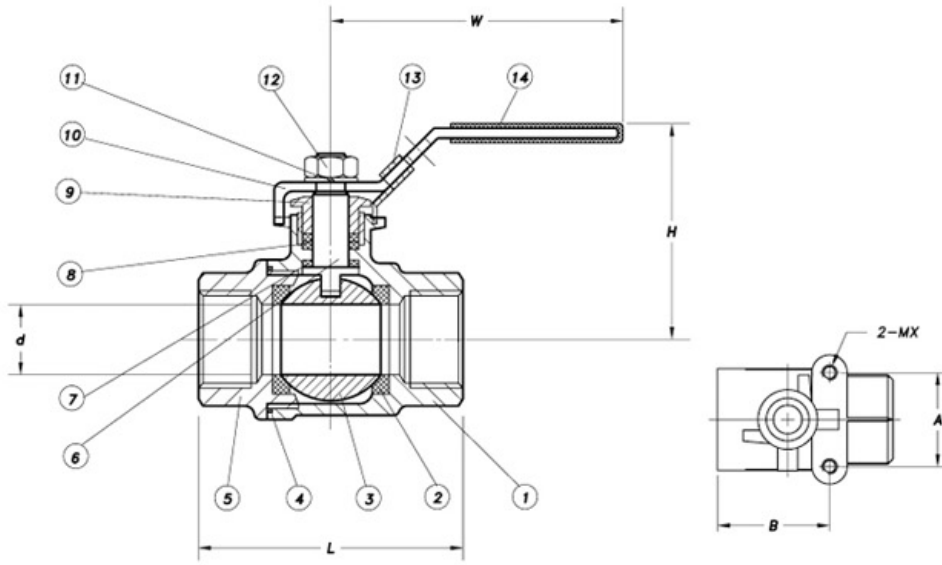
### Pressure & Temperature Chart



### Options

- **Oval Handles**
- **Carbon Steel Construction**

### Schematic Diagram



### Materials & Measurements

	d	L	H	W	Torque (in lbs.)	Weight (in lbs.)	A ±0.010	B ±0.010	MX	HOLE DEPTH
1/4"	0.38	2.12	1.65	4.17	35	0.48	1.120	1.248	10-24UNC	through
3/8"	0.38	2.12	1.65	4.17	35	0.48	1.120	1.248	10-24UNC	through
1/2"	0.50	2.42	1.81	4.17	49	0.70	1.120	1.299	10-24UNC	0.313
3/4"	0.69	2.82	2.09	5.79	71	1.32	1.370	1.827	10-24UNC	0.313
1"	0.87	3.33	2.28	5.83	88	1.96	1.370	1.937	10-24UNC	0.313
1-1/4"	1.00	3.62	2.68	7.60	124	2.67	1.500	2.085	1/4-20UNC	0.469
1-1/2"	1.25	4.04	2.83	7.60	159	3.86	1.500	2.250	1/4-20UNC	0.469
2"	1.50	4.65	3.07	7.60	221	5.90	1.500	2.465	1/4-20UNC	0.469

ITEM	PARTS	MATERIAL
1	Body	ASTM A351-CF8M / ASTM A216 - WCB
2	Ball Seat	RPTFE (15%)
3	Ball	316 STAINLESS STEEL
4	Body Gasket	PTFE
5	Cap	ASTM A351-CF8M / ASTM A216 - WCB
6	Stem	316 STAINLESS STEEL
7	Thrust Washer	PTFE
8	Packing	SS304
9	Gland Nut	
10	Handle	
11	Washer	
12	Nut	
13	Lock Device	PLASTIC
14	Plastic Cover	

**Investment Casting Ball Valve, Standard Bore, Screw End, 2000/1500 WOG**

- Investment Casting for Body and Cap
- Threaded Ends: ANSI B2, BS 21, DIN 259/299
- Internal Entry Blow-Out Proof Stem
- Pressure Rating: 1/4" - 1" 2000psi 1 1/4" - 2" 1500psi
- Material: See Table (Left)
- Pressure Test: API 598

### HOW TO ORDER

VALVE SIZE	VALVE SERIES	BODY	BALL & STEM	SEAT	ENDS	OPTIONS
1/4" - 2"	20= 2PC STD Port	6=316ss / 4=Carbon Steel	6=316	R=RTFE	TE=NPT	OH=Oval Handle