

# SERIES #53 BALL VALVE | 3-PIECE FULL PORT



## Standard Features and Benefits

### Full Port Design

Improves flow resulting in increased process efficiencies.

### 3- Piece Design

Easy to repair. In-line serviceable, swing out center section allows easy access to internal valve components without disturbing alignment of pipe.

### Blow-out Proof Stem

Stem is bottom loaded to prevent removal when valve is in service.

### Locking Handle

Enables plant personnel to secure valve in open or closed position when manually operated.

### ISO 5211 Mounting Pad

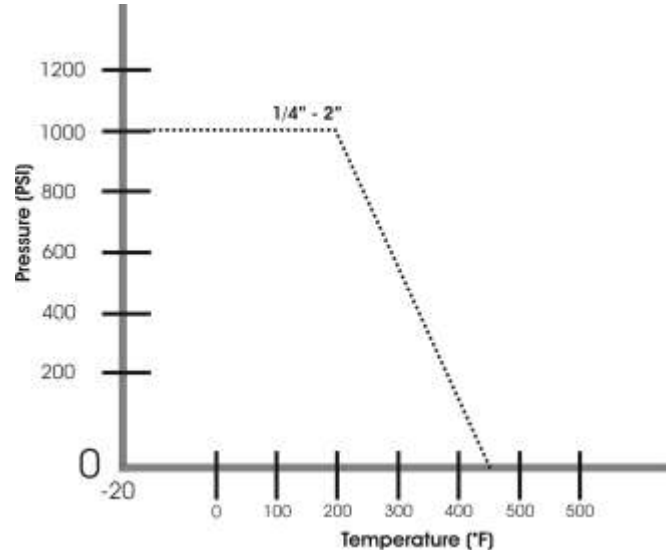
### Investment Cast

Improved dimensional control and reduces porosity.

## Operating / Test Conditions

- Temperature Range (RTFE) -20 F to 450 F 1000 W.O.G.
- All materials comply with applicable ASTM material specifications
- Test and inspection to API 598
- End connections: all to B16.34: NPT to B1.20.1:
- Socket Weld to B16.11: Butt Weld to : B16.25.

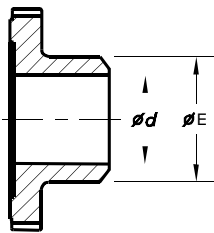
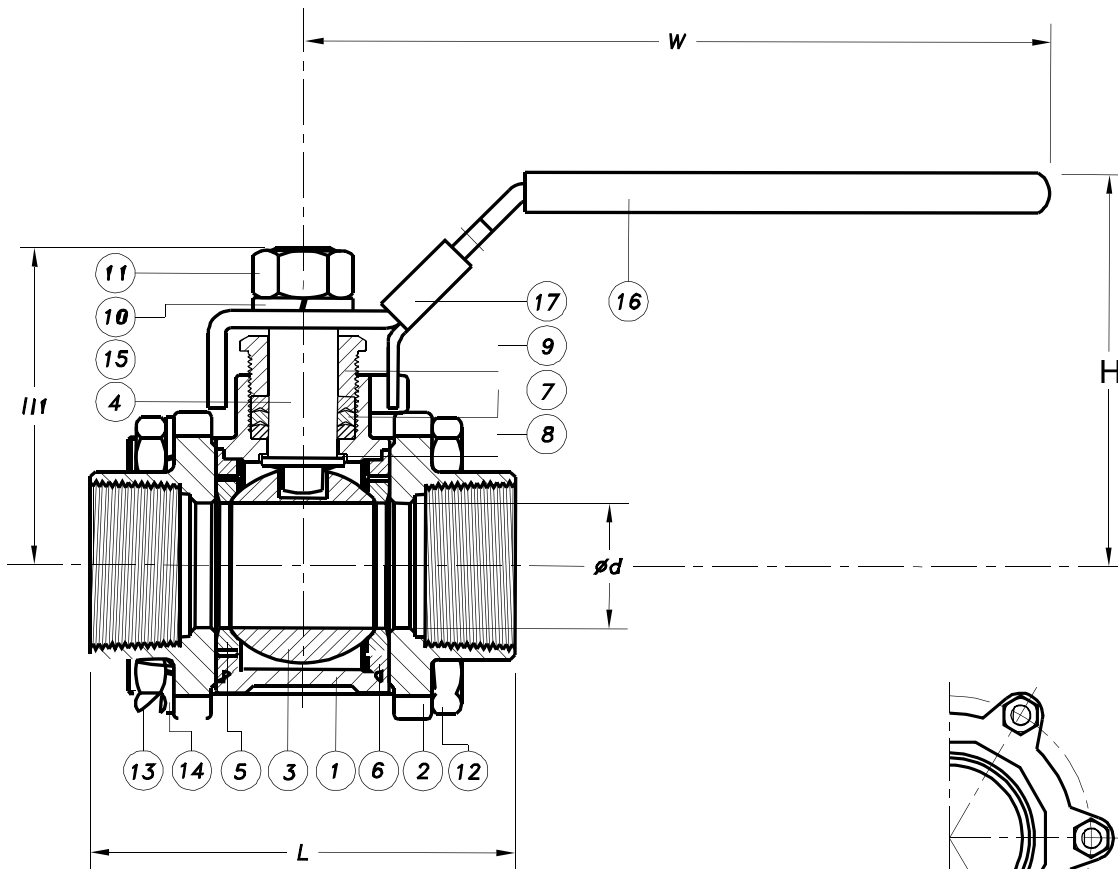
## Pressure & Temperature Chart



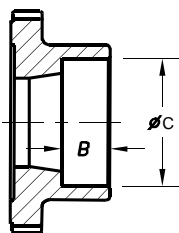
## Options

- Available in 316 Stainless Steel Construction  
ASTM A351-CF8M
- Available in Carbon Steel Construction  
ASTM A216-WCB
- End Connections available in:  
NPT, Socket Weld, SCH 5/10/40 Butt Weld

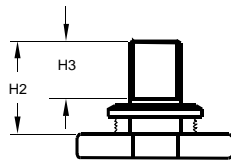
# SERIES #53 BALL VALVE | 3-PIECE FULL PORT



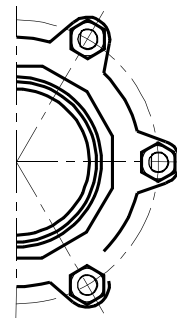
Butt Weld SCH 40



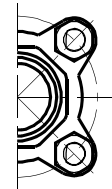
Socket Weld



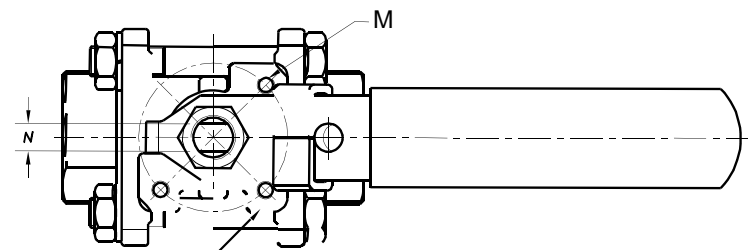
Stem Dimensions for Actuation



For 3" to 4"  
6 Bolt Design



For 1/4" to 2-1/2"  
4 Bolt Design



Mounting Pad per ISO 5211

Item	Description	Material	
1	Body	ASTM A351-CF8M	
2	Cap	ASTM A216-WCB	
3	Ball	ASTM A351-CF8M	
4	Stem	ASTM A276-316	
5	Seat	RTFE	
6	Gasket	PTFE	
7	Packing		
8	Thrust Washer	AISI 304SS	
9	Gland Nut		
10	Lock Washer		
11	Stem Nut		
12	Body Bolt		
13	Nut		
14	Lock Washer		
15	Handle		
16	Handle Sleeve		PVC
17	Latch Lock		AISI 304SS

# SERIES #53 BALL VALVE | 3-PIECE FULL PORT

## DIMENSIONS

SIZE	L	W	H	H1	H2	H3	∅d	E	B	O0	N	M	ISO 5211 B.O.	Wgt (lbs)
1/4"	2.56	3.94	1.59	1.59	.65	.50	.46	.58	.39	.57	.20	10-24	F03/1.42	.8
3/8"	2.56	3.94	1.59	1.59	.65	.50	.49	.71	.39	.71	.20	10-24	F03/1.42	.8
1/2"	2.56	3.94	1.71	1.71	.69	.50	.59	.88	.39	.87	.20	10-24	F03/1.42	1.1
3/4"	2.95	4.92	2.07	2.07	.91	.62	.79	1.09	.51	1.08	.24	10-24	F03/1.42	1.6
1"	3.35	5.87	2.48	2.48	.97	.62	.98	1.35	.51	1.34	.38	10-24	F04/1.65	2.3
1- 1/4"	3.98	5.87	2.68	2.68	.98	.62	1.26	1.70	.51	1.69	.38	10-24	F04/1.65	3.7
1 -1/2"	4.41	7.48	3.16	3.16	1.18	.81	1.50	1.94	.51	1.93	.38	1/4-20	F05/1.97	5.4
2"	5.12	7.48	3.43	3.43	1.16	.81	1.97	2.42	.63	2.40	.38	1/4-20	F05/1.97	7.7
2 - 1/2"	6.38	9.84	4.49	4.49	1.54	1.00	2.48	2.93	.63	2.91	.47	5/16-18	F07/2.76	14.8
3"	7.40	9.84	4.81	4.81	1.52	1.00	2.99	3.58	.63	3.54	.47	5/16-18	F07/2.76	21.6
4"	8.82	12.72	6.35	6.35	2.11	1.00	3.78	4.55	.79	4.55	.63	7/16-14	F10/4.02	42.3

## How to Order

Valve Size	Valve Series	Body	Ball & Stem	Seat	Ends	Options
1/2" Thru 4"	53 = 3 PC Full Port	6= 316 4= Carbon Steel	6 = 316	R = RTFE	SW = Socket Weld TE = NPT BW = Butt Weld	OH = Oval Handle BW5 = SCH. 5 BW10 = SCH. 10